

Quality of Evidence, Evidence of Quality

How a Community of Practice contributes to quality outcomes in health care by improving the uptake of evidence in practice.

T Bruhn¹, S Huckson²

How the “Emergency Care Community of Practice” works as a source of evidence and medium for implementation.

“Communities of Practice” are networks that have been established, across a variety of industries including health, to promote the sharing and use of information and problem solving in groups within a common context and who face similar challenges in improving practice.

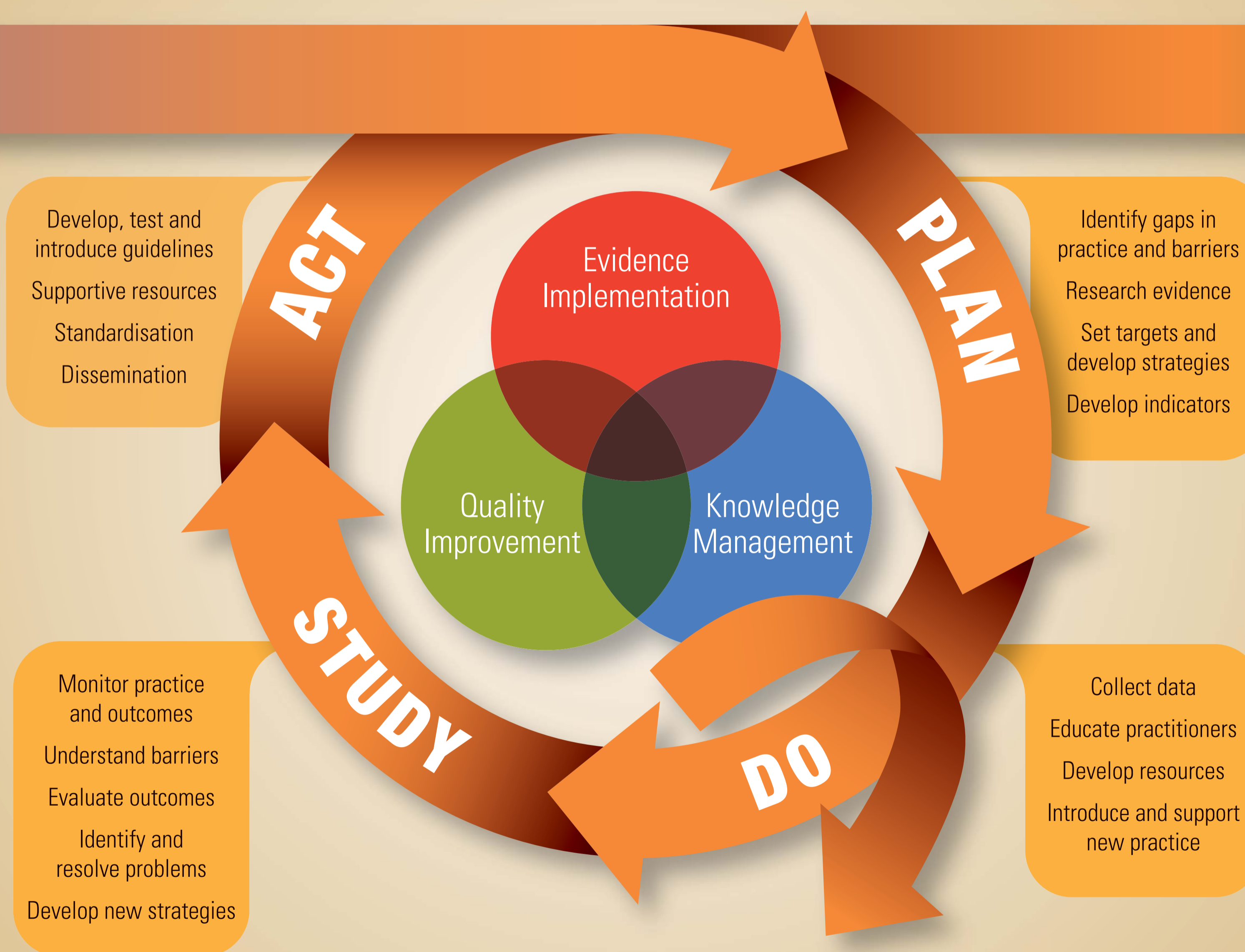
Quality Outcomes achieved by the Emergency Care Community of Practice, in participating Emergency Departments throughout Australia.

SOURCE

- Using knowledge, expertise and experience in the specific area of practice
- Connecting practitioners with best evidence
- Developing evidence implementation skills
- Mentoring
- Accessing a wide range of reputable sources of evidence and best practice
- Using all types of evidence
- Collaborating between disciplines
- Networking
- Sharing stories of improvement
- Hearing from the experts
- Linking quality improvement teams
- Communicating via newsletters, interactive website, teleconferences
- Using supportive infrastructure
- Brokering by the National Institute of Clinical Studies (NICS)

OUTCOMES

- Rapid spread of “evidence based practice”, and evidence summaries
- Development of resources
- Identification of new clinical priorities and targets
- Improved interdisciplinary communication and referral
- Formations of “Partnerships”
- Development of clinical resources, policies, procedures and protocols
- Introduction of “best practice” guidelines, tools and algorithms
- Development of clinical indicators aligned with best practice
- “Clinical Leaders” group formed
- Other project teams fostered
- Mental Health Project implemented
- Reduced waiting and referral times in the emergency department
- Reduced time to analgesia
- Improved staff knowledge, confidence and morale



The Emergency Care Community of Practice is the focus of a current research study being conducted by NICS-RMIT PhD Scholar, Tonia Bruhn. The study is examining the effectiveness and potential of the Community of Practice as a model for evidence implementation in a variety of health care settings.